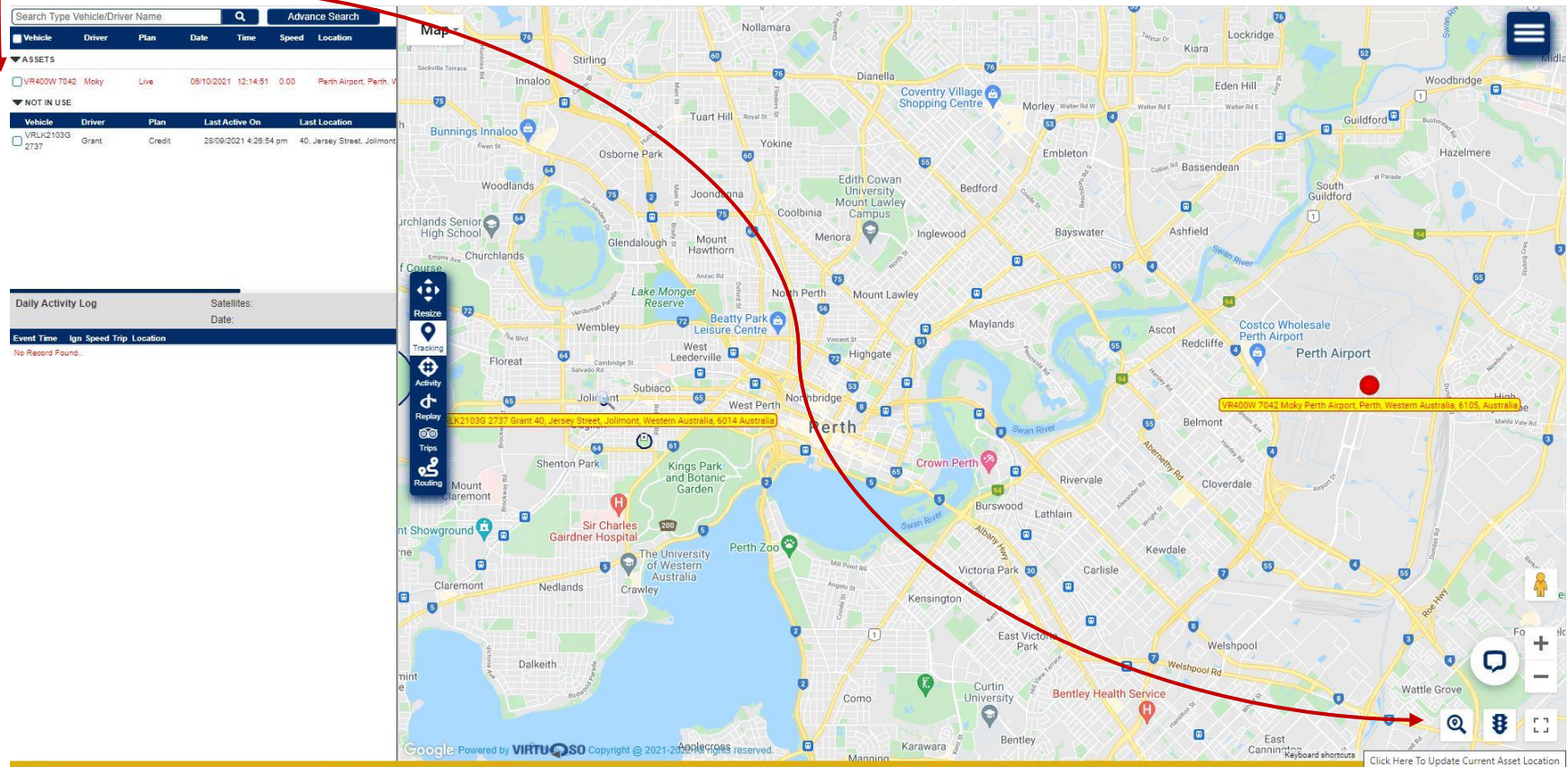


Poll

Poll use for current location on vehicle.

Select vehicle in left panel then send poll command a vehicle if you can't select any vehicle poll command send all vehicle.

Click on poll icon on map right corner.



After click poll button update current assets location.

The screenshot displays a fleet management application interface. On the left, there is a sidebar with a search bar and a table of assets. The table has columns for Vehicle, Driver, Plan, Date, Time, Speed, and Location. Under the 'ASSETS' section, two vehicles are listed: VR400W 7042 Moky (Live, 08/10/2021 12:14:51, 0.00, Perth Airport, Perth, WA) and VRPK2103G 2737 (Grant, Credit, 28/09/2021 4:25:54 pm, 40, Jersey Street, Jolimont, WA). Below the table is a 'Daily Activity Log' section with columns for Event Time, Ign, Speed, Trip, and Location, showing 'No Record Found...'. The main area is a map of Perth, Australia, with a red location pin and a white dialog box in the center. The dialog box contains a location pin icon, the text 'Update current asset location request sent.', and an 'OK' button. A yellow tooltip on the map shows the coordinates for the selected asset: 'VR400W 7042 Moky Perth Airport, Perth, Western Australia, 6105, Australia'. The map includes various landmarks like the University of Western Australia, Perth Zoo, and Perth Airport. The bottom of the map shows 'Powered by VIRTUOSO Copyright © 2021-2022 All rights reserved.' and 'Map data ©2021 Terms of Use Report a map error'.