

To open setting panel click on the settings button in navbar menu.

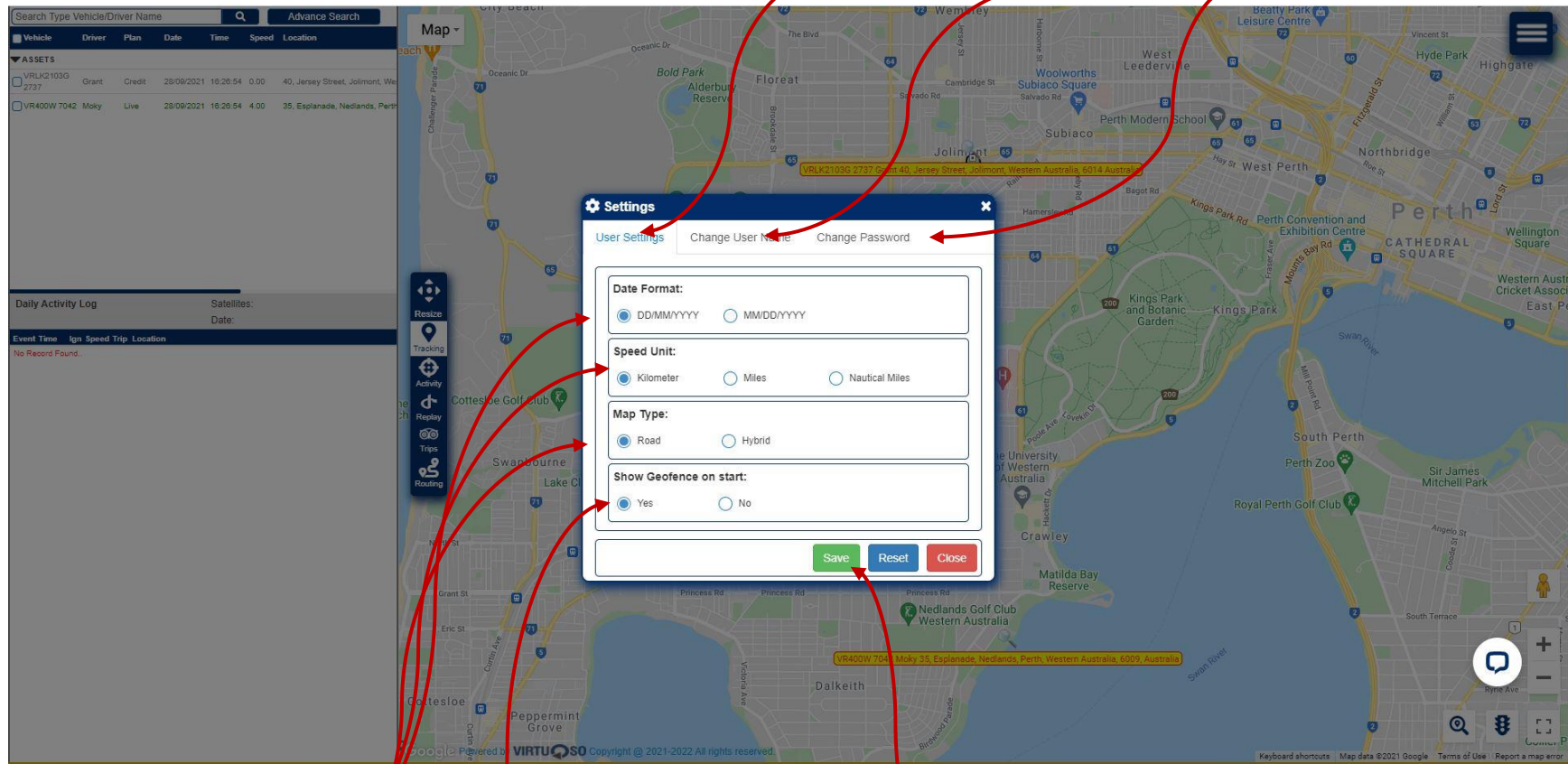
The screenshot displays a web-based vehicle tracking application. On the left, there is a sidebar with a search bar and a table of assets. The main area is a map of Perth, Australia, with a red arrow pointing from the top-left text to the 'Settings' button in the bottom-right navigation bar. The navigation bar includes buttons for Home, Analytics, Dashboard, Admin, Settings, Help, and Sign out. The 'Settings' button is highlighted with a red circle and a red arrow.

Vehicle	Driver	Plan	Date	Time	Speed	Location
<input type="checkbox"/> VRLK21030 2737	Grant	Credit	28/09/2021	18:28:54	0:00	40, Jersey Street, Jolimont, Western Australia
<input type="checkbox"/> VR400W 7042 Moky	Live		28/09/2021	18:28:54	4:00	35, Esplanade, Nedlands, Perth, Western Australia

Navigation Bar: Home, Analytics, Dashboard, Admin, **Settings**, Help, Sign out

Footer: M-PROTEKT Gold, Powered by VIRTUOSO Copyright © 2021-2022 All rights reserved. Keyboard shortcuts | Map data ©2021 Google | Terms of Use | Report a map error

Setting panel will open and in this panel, you can see three tabs => 1. User Settings, 2. Change Username, 3. Change Password

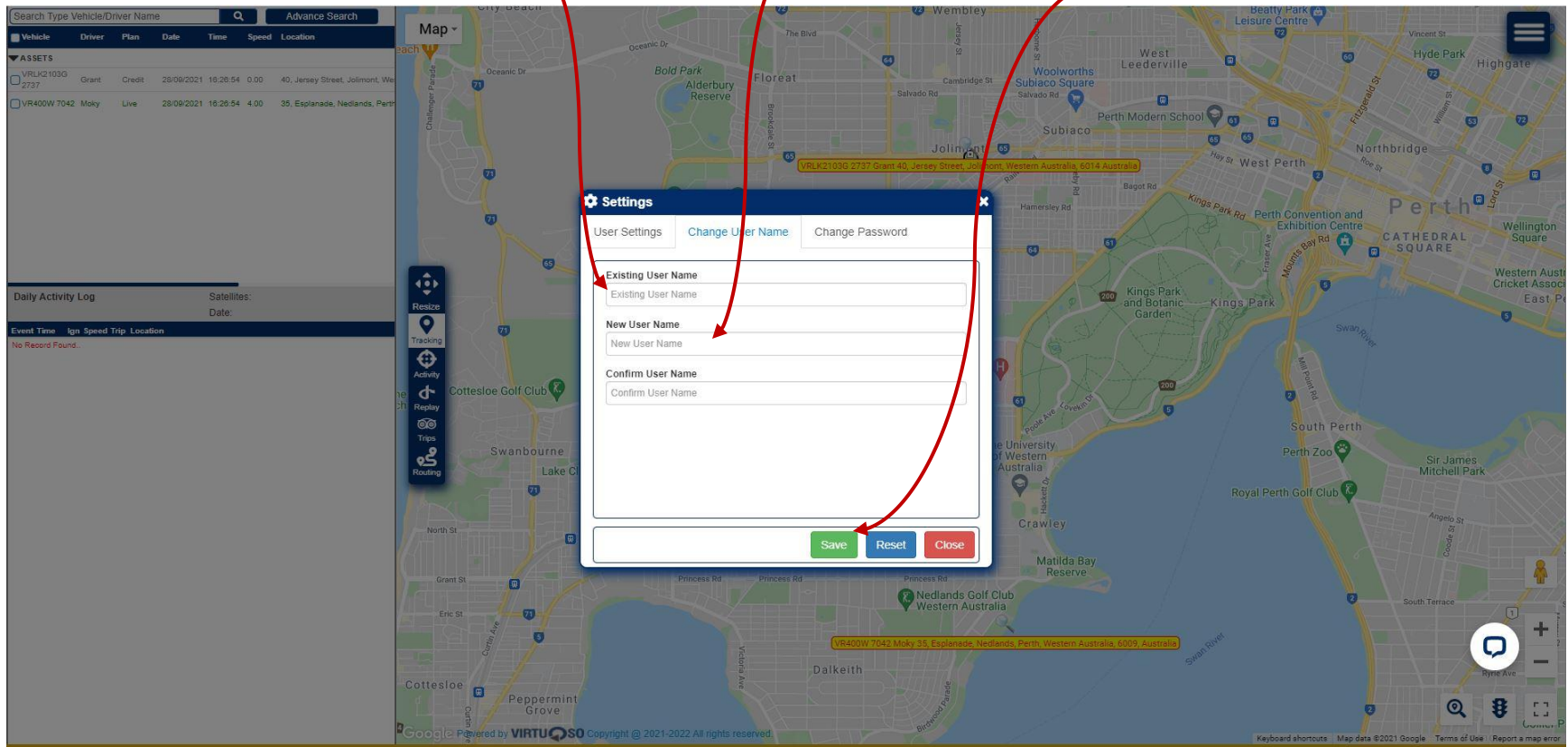


In User setting tabs you can change setting for following items:

1. API's Date Format
2. Speed Unit
3. Map Type
4. Show Geofence on API Start

Click on Save button after change setting to save changes.

In Change username tab you need to fill existing username and new username to change. Click on Save button to save.



In Change password tab you need to fill existing password and new password to change. Click on Save button to save.

The screenshot displays a vehicle tracking application interface. On the left, there is a sidebar with a search bar and a table of assets. The main area shows a map of Perth, Australia, with a 'Settings' dialog box overlaid. The dialog box has three tabs: 'User Settings', 'Change User Name', and 'Change Password'. The 'Change Password' tab is active, showing three input fields: 'Existing Password', 'New Password', and 'Confirm Password'. A green 'Save' button, a blue 'Reset' button, and a red 'Close' button are at the bottom of the dialog. Three red arrows point from the text above to the 'Existing Password', 'New Password', and 'Save' fields respectively.

Vehicle	Driver	Plan	Date	Time	Speed	Location
VRLK2103G 2737	Grant	Credit	28/09/2021	16:29:54	0.00	40, Jersey Street, Jolimont, Western Australia, 6000, Australia
VR400W 7042	Moky	Live	28/09/2021	18:26:54	4.00	35, Esplanade, Nedlands, Perth, Western Australia, 6009, Australia

Settings

User Settings Change User Name **Change Password**

Existing Password
Existing Password

New Password
New Password

Confirm Password
Confirm Password

Save Reset Close